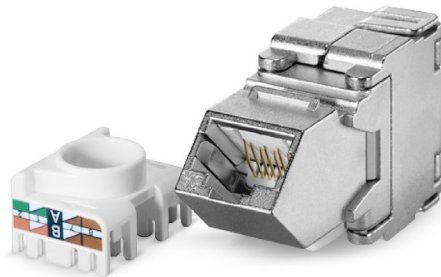


KS-TA 1/8 Cat.6/E_A, 45 degree angled

RJ45 module, shielded, Category 6/E_A

for Patch panel KS 24x-s



KS-TA 1/8 Cat.6/E_A RJ45 module,
shielded, 45 degree angled



Patch panel KS 24x-s, 19"/1U, shielded

Descrizione

The module is re-usable.

For the transmission of digital and analogue voice-, video- and data signals.

The KS-TA RJ45 module exceeds the IEC 60603-7-5 standard's requirements for Cat. 6 connecting hardware up to 250 MHz.

It also fulfils all Class EA Permanent-Link (PL) requirements up to 500 MHz when combined with Category 7 or 7A data cables. Therefore it is applicable for 10-Gigabit Ethernet transmissions in accordance with IEEE 802.3.

Useable for Power over Ethernet Plus (PoE+) corresponding to IEEE 802.3at.

The module KS-TA is suitable for the patch panel KS24x-s (Article No. 418023) only.

Due to the module's 45 degree angled front patch connections can be made diagonally from left and right. Solid zinc die casting housing with mounting clip for installation in Keystone panel KS 24x-s.

Contact spring with phosphor bronze alloy, plated with gold.

For connecting the wires a wire manager is used in combination with two integrated moveable housing wings for tool-less IDC connections.

Only for cutting the wires a plane wire cutter is necessary.

Strain relief via cable tie.

Proprietà generali

Installation temperature	-10 °C - +60 °C
Storage temperature	-40 °C - +70 °C
Operating temperature	-20 °C - +60 °C

Proprietà elettriche

Gbit/s	A 10 Gbit/s
Schermatura	schermati

Proprietà meccaniche

Connection type	Connettori a perforazione di isolante IDC
Solid copper wire	0.50 (AWG 24) - 0.65 (AWG 22)
Stranded copper wire	AWG26/7 - AWG26/8
Diameter over Insulation	0.70 mm - 1.40 mm
Re-connection	for AWG 22, AWG 23 and AWG 24 quando si usa lo stesso filo o un diametro maggiore
Re-usable	una volta

Standards

Cat./Class	Cat.6 / Class E _A
PoE	IEEE 802.3bt Type 4 (100W)
Connector standards	IEC 60603-7-5
Cabling standards	ISO/IEC 11801, EN 50173-1, TIA/EIA 568-x

Versioni

Codice art.	Prodotto	Colore	Peso [kg]	Unità di imballaggio	GTIN / EAN
418068	RJ45 module KS-TA 1/8 Cat.6/E _A shielded, 45 degree angled	argento	0,04 kg	10 pcs.	40393910165012

Con riserva di modifiche tecniche

A partire da 2023-09-14 08:00:04