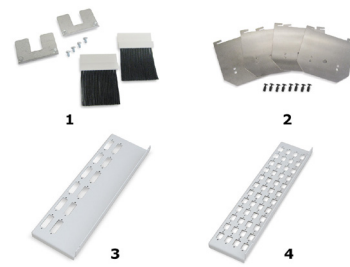
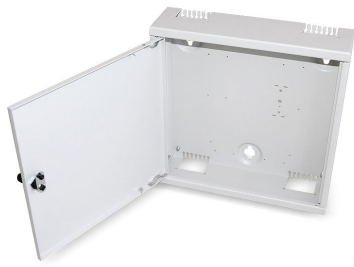


Fibre distribution box OV-W S

wall mounted



Fibre distribution box OV-W Accessories:

1. Cable entry 2 plates and 2 brush strips
2. Take-up for splice tray
3. Patch panel for 12 x SC-D
4. Patch panel for 48 x SC

Description

For the distribution of the fibre optic backbone cabling to the horizontal cabling.
For splice connections or removable connections.

Scope of delivery

Fibre distribution box OV-W with lock and two keys,
splice tray holder for four cassettes,
fastening set

Versions

Numero Materiale	Product	Peso [kg]	Packing unit
416904	FO wall mount distribution box 300 x 300 x 85 mm (unloaded, with splice tray holder)	1,5 kg	1 pc.
416905	Cable entry with 2 plates and 2 brush strips	0,09 kg	1 kit
416906	Patch panel for 12x SCD	0,2 kg	1 pc.
416979	Patch panel for 48x SC	0,2 kg	1 pc.
416989	Patch panel for 48x ST	0,4 kg	1 pc.
416988	Splice tray take-up	0,05 kg	4 pcs.

Con riserva di modifiche tecniche

A partire da 2021-02-18 09:34:12